

BROCHURE

BlueVerse RightAction™

Enterprise AI Governance for the Autonomous Era



Navigating the New Era of AI Governance

As AI evolves from passive tools to autonomous agents, governance is no longer optional; it's mission-critical. Industry leaders, such as Forrester, caution that AI agents can fail unpredictably and at scale, while the Everest Group¹ identifies governance as the primary barrier to adoption. Legal precedents already hold enterprises accountable for AI-driven actions, underscoring the need for robust oversight and regulation. While agentic automation promises to reduce errors by up to 80%,² even minor missteps can trigger systemic failures. The question isn't whether to govern AI—it's how fast you can implement it.

Why AI Governance Can't Wait

Autonomous AI unlocks tremendous value, but without proper controls, it can introduce:

- **Opaque Decisions:** Hard-to-Explain Outcomes Undermine Trust and Auditability.
- **Systemic Risks:** Errors can scale rapidly, bypassing traditional safeguards.
- **Regulatory Pressure:** Compliance is mandatory, not optional.
- **Operational Exposure:** A single misstep can damage both reputation and revenue.

Introducing BlueVerse RightAction by LTIMindtree

LTIMindtree RightAction™ is a first-to-market governance framework embedded within the BlueVerse AI ecosystem. Its purpose is to ensure that every AI-driven action is context-aware, policy-aligned, and compliant, without slowing down innovation. It ensures:

- **Policy-driven Execution and Real-Time Auditing:** Every decision is logged and traceable.
- **Risk-aware Decisioning and Context Mapping:** Uses domain ontologies to align actions with enterprise semantics.
- **Human-In-The-Loop Controls:** Critical decisions can be intercepted or overridden.
- **Adaptive Learning:** Feedback loops refine governance rules continuously.
- **Closed-Loop Orchestration:** Ensures optimal timing, channel, and compliance for actions.

In the RightAction™ framework showcased below, each layer builds upon the previous one, starting with a secure and scalable infrastructure, progressing to foundational data and connectivity, and culminating in specialized AI agents and compliance controls—all resulting in tangible business value for financial services organizations.

RightAction™ General Framework

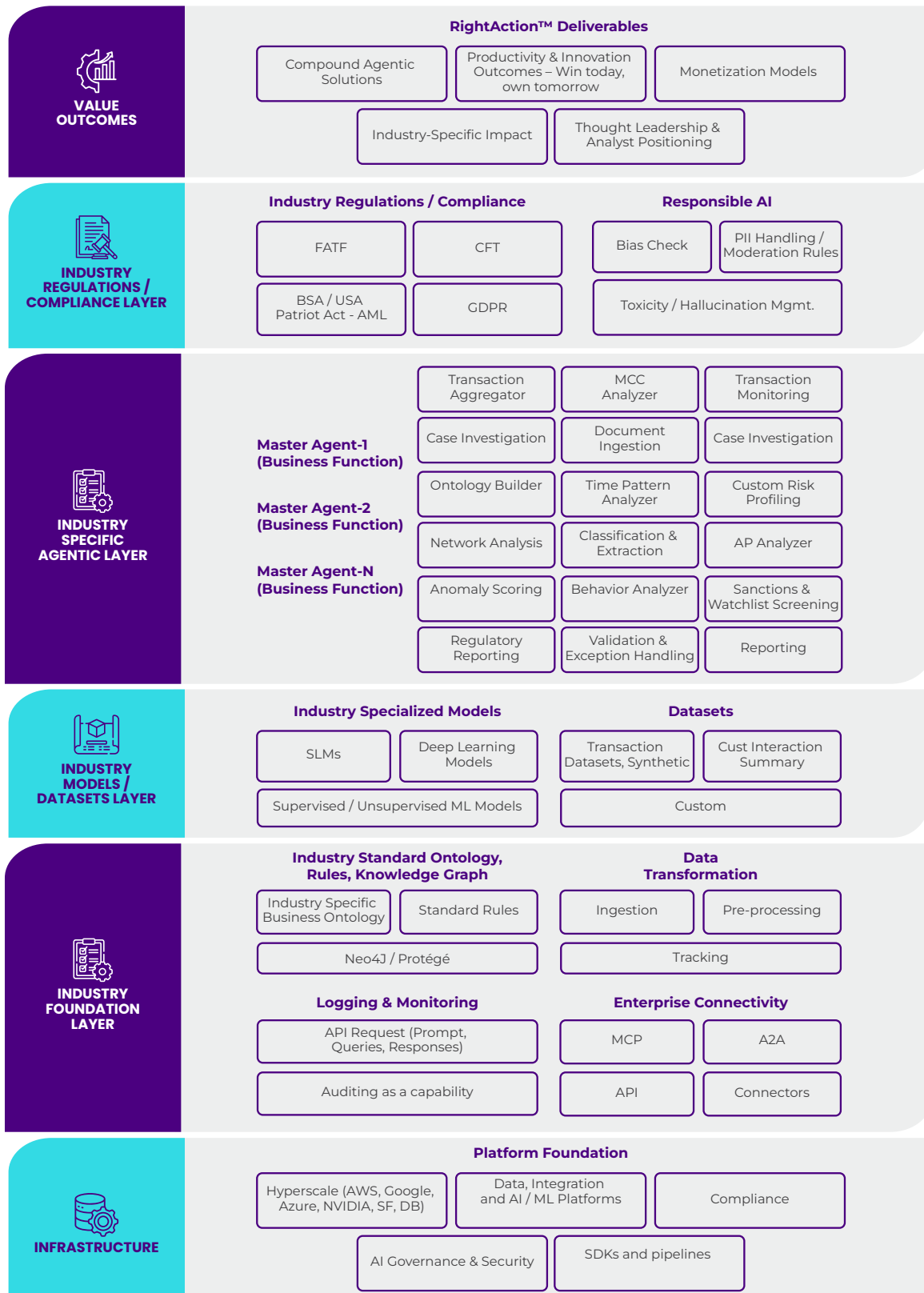


Figure 1: RightAction™ Framework

RightAction™: Layer-by-Layer Overview

Value Outcomes

The RightAction framework's ultimate goals are innovative solutions, monetization, productivity gains, and industry impact. It ensures that every action taken by the system drives measurable value for the organization and its stakeholders.

Industry Regulations / Compliance

Integrates global regulations and responsible AI practices to guarantee ethical, compliant, and risk-free automation across all processes.

Industry-Specific Agentic Layer

Provides intelligent AI agents for core business functions, enabling autonomous execution of industry-critical tasks with explainability and accuracy.

Industry Models / Dataset Layer

Supplies domain-specific models and curated datasets to power precision, adaptability, and high-performance AI-driven decisions.

Industry Foundation Layer

Acts as the backbone for governance and interoperability through ontologies, rules, data transformation, monitoring, and enterprise connectivity.

Infrastructure

Delivers a secure, scalable technology stack including cloud platforms, AI/ML tools, and SDKs to support deployment and future-ready operations.

Strategic Benefits

Risk and Compliance Control

Built-in safeguards adapt to evolving regulations.

Enhanced Auditability

Provides clear traceability of actions with well-documented logs and records, achieving over **90%** auditability.

Greater Explainability

Ensures transparent decisions with documented rationale or system logic, enhancing trust and understanding of outcomes.

Higher Accuracy

Achieves more than **95%** accuracy by leveraging a well-trained, domain-specific language model.

Improved Efficiency

Streamlines workflows, enabling faster task completion and reducing the effort required for corrections.

Why LTIMindtree?

- **AI-First Thinking:** From pilot to scale, we embed AI at the core of transformation.
- **Cross-Industry Expertise:** Tailored solutions for your sector's unique challenges.
- **Faster Deployment:** Prebuilt agents and frameworks slash time-to-market.
- **Trusted Execution:** Governance, orchestration, and security; baked in.

Lead with Confidence in an AI-Driven World

With **BlueVerse RightAction™**, you don't just adopt AI; you govern it. Whether you're launching your first agent or scaling enterprise-wide, RightAction™ ensures every step is governed, every action is aligned, and every outcome is trusted.

References

1. *The Rise of Agentic AI*, Abhivyakti Sengar, Shubham Yadhav, everestgrp, October 14, 2025: <https://www.everestgrp.com/report/egr-2025-71-v-7445/>
2. *Building the Autonomous Enterprise: How Organizations Are Preparing for and Adopting AI Agents*, automationanywhere, June 2025: <https://www.automationanywhere.com/lp/forrester-building-the-autonomous-enterprise>

LTIMindtree is a global technology consulting and digital solutions company that enables enterprises across industries to reimagine business models, accelerate innovation, and maximize growth by harnessing digital technologies. As a digital transformation partner to more than 700 clients, LTIMindtree brings extensive domain and technology expertise to help drive superior competitive differentiation, customer experiences, and business outcomes in a converging world. Powered by 86,000+ talented and entrepreneurial professionals across more than 40 countries, LTIMindtree — a Larsen & Toubro Group company — solves the most complex business challenges and delivers transformation at scale. For more information, please visit <https://www.ltimindtree.com/>.