

BROCHURE

# **Strategic VMWare Migration to AWS for Scalable Growth**

Migrate. Scale. Innovate.



In today's fast-paced digital era, enterprises are reimagining their infrastructure strategies to stay ahead of evolving business demands. As organizations seek greater agility, scalability, and innovation, many are choosing to move beyond traditional data center models and embrace the cloud's full potential.

This shift marks a pivotal opportunity to modernize legacy environments and build resilient, future-ready foundations. LTIMindtree's VMware Migration to AWS solution, powered by agentic AI services, empowers enterprises to intelligently automate and orchestrate their VMware exit journey—minimizing manual effort, accelerating timelines, and enhancing decision-making with AI-driven insights.

Whether you're expanding into new markets or revitalizing aging IT ecosystems, migrating to AWS enables you to unlock the benefits of cloud-native architecture and position your business for long-term success.

# Why It Matters: The Drivers of Change

## 01 Strategic Business Expansion

- **Enter New Markets:** AWS enables global scalability and rapid deployment, helping organizations tap into new geographies and customer segments.
- **Expand Your Datacenter:** Cloud-native infrastructure allows seamless extension of on-premises environments without the constraints of physical hardware.

## 02 VMware Licensing Disruption Post-Broadcom Acquisition

- The transition from perpetual to subscription-based licensing, combined with a shift from per-CPU to per-core pricing, has led to potential cost increases for customers ranging from 100% to as much as 800% at renewal.
- Customers are now required to pay for bundled software they may not need, while the future of key VMware products—such as Horizon VDI—remains unclear, creating risk for long-term infrastructure planning.
- Clients with perpetual licenses lose access to future maintenance once their ELA or active support agreements expire, forcing a transition to new models with limited clarity on service continuity.

## 03 Operational Agility and Innovation

- AWS Transform accelerates migration, DevOps integration, and GenAI-powered provisioning, thereby reducing manual effort and compressing delivery cycles.
- Migrating to AWS opens access to a rich ecosystem of cloud-native services—from analytics and AI to security—enabling organizations to innovate faster and build differentiated digital experiences.

## 04 Technology Modernization and Risk Mitigation

- With 74% of VMware customers exploring alternatives, AWS offers a robust foundation for future-proofing infrastructure through container-native and event-driven architectures. This empowers businesses to seamlessly integrate with a wide array of AWS services and accelerate innovation.
- AWS provides unified management and monitoring tools, ensuring reliability and performance across hybrid setups.

# Migrate VMware to AWS Cloud with Minimal Impact

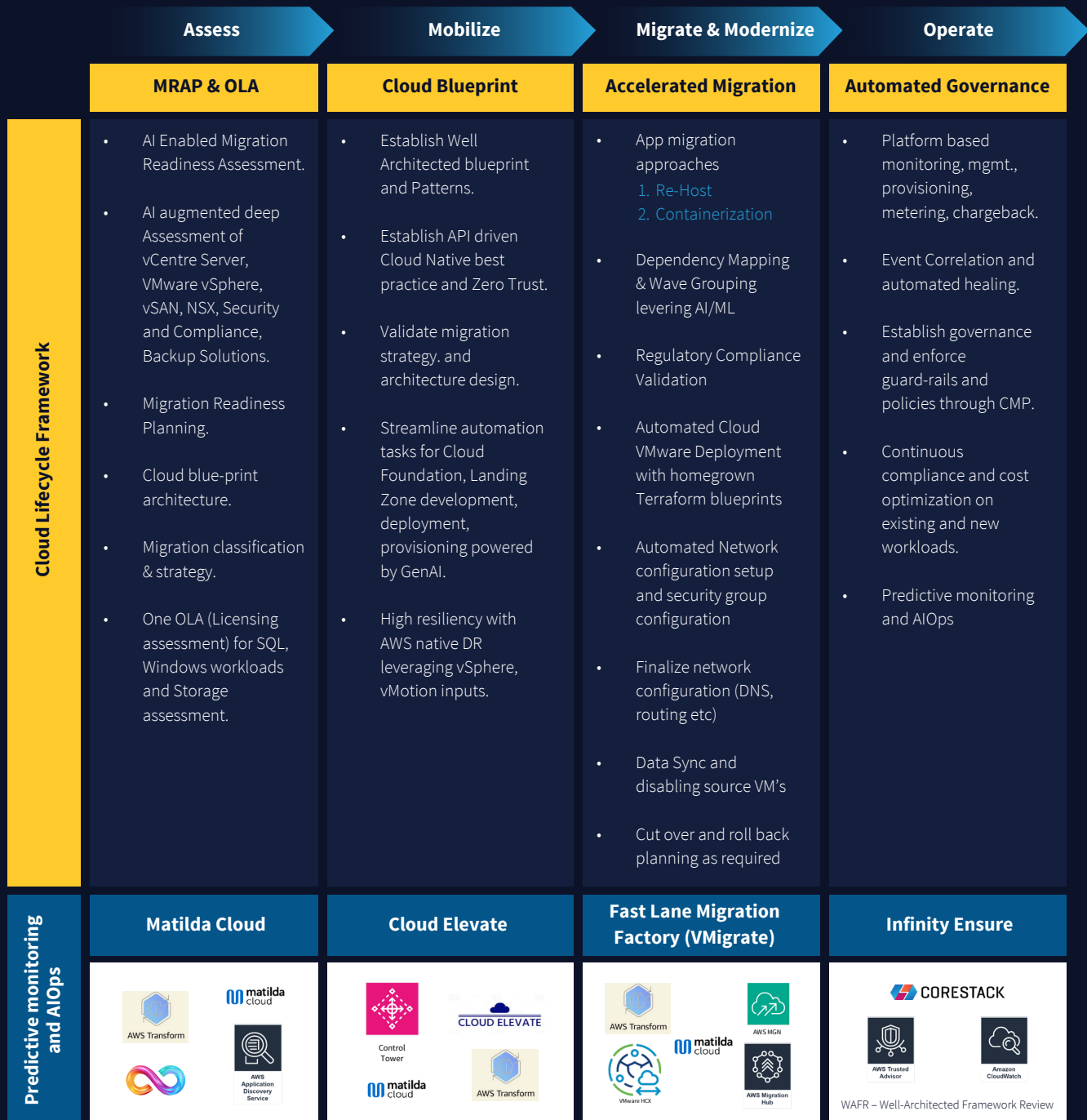


Figure 1: LTIMindtree's VMware to AWS Migration Approach

## Our Key Value Proposition

### 01

#### **AI Enabled Assessment for Strategic Planning**

Perform intelligent environment analysis and AI-generated wave plans leveraging AWS Transform agentic AI capabilities to generate wave plans, uncover dependencies, and build a data-driven Total Cost of Ownership (TCO) business case.

### 02

#### **AI-Accelerated Migration with Minimal Disruption**

Leverage AWS Transform's AI-driven orchestration engine to automate workload migration across VMware environments. Integrated with AWS MGN, Matilda Cloud EC2, RDS, and S3, this approach ensures rapid cutover with zero downtime and minimal business impact.

### 03

#### **Smart Licensing Optimization**

Leverage AWS's Optimization and Licensing Assessment (OLA) to mitigate cost impact across VMware, Windows, SQL, and storage.

### 04

#### **Cost-Efficient Execution with AWS Funding**

Tap into AWS funding programs and LTIMindtree accelerators to reduce migration costs and maximize ROI.

## Key Benefits

- | **40–50%** reduction in effort through AI-generated application grouping and wave planning.
- | **30–40%** acceleration in portfolio analysis and cloud readiness assessment.
- | Minimized reliance on subject matter experts due to AI-led automation.
- | **30–40%** savings achieved through automated migration, dedicated migration factory, and cloud-native deployment strategies.
- | Real-time dashboards and reports for tracking migration progress and application cutovers.
- | End-to-end governance is achieved through continuous compliance, FinOps, and security monitoring through our Ensure framework.

## Success Story

A global business travel platform operating in 140+ countries faced high costs and limited agility due to fragmented infrastructure across 15 data centers. Migrating 2,000+ workloads and 230+ applications—including booking and expense systems—required zero downtime and secure transfer of 450+ TB of sensitive data.

LTIMindtree partnered with AWS to conduct a Cloud Business Assessment, define a migration roadmap, and execute a factory-led migration. Using IaC tools and concierge support, 25 critical apps were onboarded in 48 hours, and AWS environments were provisioned in just 2 hours.

### Results

**90%+**

workloads migrated  
in 18 months

**40%**

data center  
cost savings

**45%**

reduction in  
operational spend



Provisioning time cut  
from 4 days to 2 hours

<https://www.ltimindtree.com/enterprise-solutions/aws/vmware-on-aws/migrating-2000-workloads-for-a-global-business-travel-platform-with-90-cloud-adoption-in-18-months/>

### Make the Smart Move Today!

Accelerate your VMware migration journey with LTIMindtree's AI-powered, AWS-backed solution. Reduce costs, boost agility, and future-proof your infrastructure—seamlessly and strategically. Write to us at [cis.pulse@ltimindtree.com](mailto:cis.pulse@ltimindtree.com) to learn more.



**LTIMindtree** is a global technology consulting and digital solutions company that enables enterprises across industries to reimagine business models, accelerate innovation, and maximize growth by harnessing digital technologies. As a digital transformation partner to more than 700 clients, LTIMindtree brings extensive domain and technology expertise to help drive superior competitive differentiation, customer experiences, and business outcomes in a converging world. Powered by 86,000+ talented and entrepreneurial professionals across more than 40 countries, LTIMindtree — a Larsen & Toubro Group company — solves the most complex business challenges and delivers transformation at scale. For more information, please visit <https://www.ltimindtree.com/>