



A global platform to measure, monitor and report travel emissions

Global organizations are dedicated to implementing tangible measures to mitigate the environmental impact of their business operations. Within the emissions portfolios of most companies, Scope 3 contributions are notably substantial, particularly in the context of business travel. It is imperative for companies to track, report, and reduce emissions, meeting the expectations of regulators and stakeholders. Consequently, organizations seek sustainable solutions that facilitate monitoring and deriving actionable insights for emission reduction.

Currently, companies reporting travel emissions often face challenges such as:

- Tedious process of data collection from different travel partners and stakeholders
- Significant effort in manual calculation of emissions from different travel modes
- Longer time spent on manual report generation with a risk of errors and re-work
- Absence of a solution for tracking emission against set goals and extracting actionable insights to minimize them
- Time-consuming process of collecting documents for meeting audit requirements

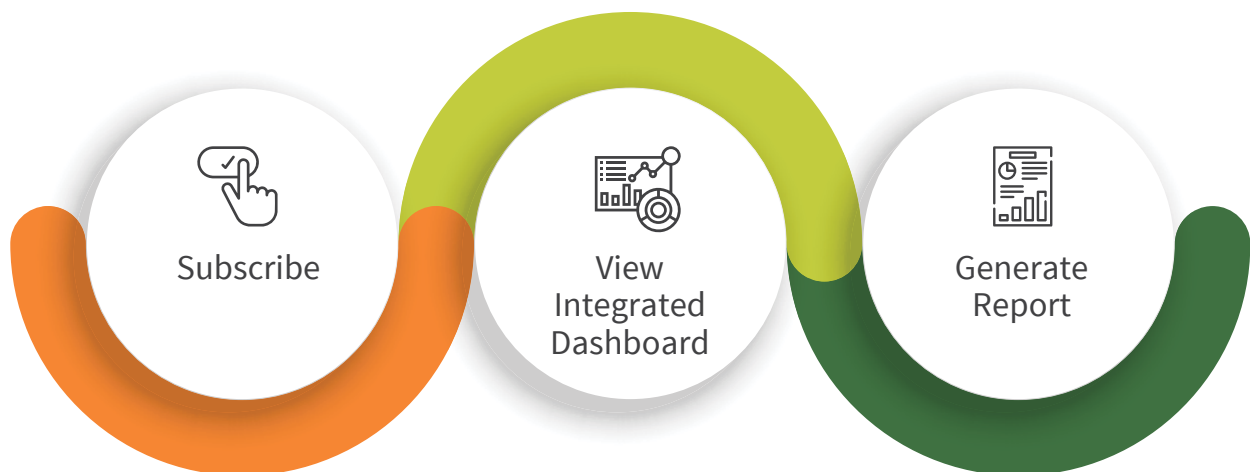


There is a need to seamlessly capture, monitor, report and reduce emission from business travels and drive sustainable decisions.

Our Solution

Green Carpet, an innovative SaaS-based platform, helps you to track and reduce your carbon footprint from corporate travel, while also saving reporting cost and time. The platform automates most manual processes by simplifying data capture and analysis of travel emissions. Its insightful dashboards allow you to track your carbon footprint and make informed decisions to reduce your environmental impact and achieve net zero goals.

The platform helps you to achieve this in 3 simple steps:



Key features of the Green Carpet Platform:

Green Carpet, an innovative SaaS-based platform, helps you to track and reduce your carbon footprint from corporate travel, while also saving reporting cost and time. The platform automates most manual processes by simplifying data capture and analysis of travel emissions. Its insightful dashboards allow you to track your carbon footprint and make informed decisions to reduce your environmental impact and achieve net zero goals.

- | | |
|--|---|
| <ul style="list-style-type: none">Automated data capture mechanism | <ul style="list-style-type: none">Emission reduction insights |
| <ul style="list-style-type: none">Easy integration with travel partners and in-house tools | <ul style="list-style-type: none">Goal setting and tracking to achieve net zero |
| <ul style="list-style-type: none">Simplified reporting | <ul style="list-style-type: none">Benchmarking for continuous improvement |

Key Benefits

~70-80% saving

in time for report preparation

~40-60% reduction

in reporting costs

100%

visibility of travel emissions across various modes

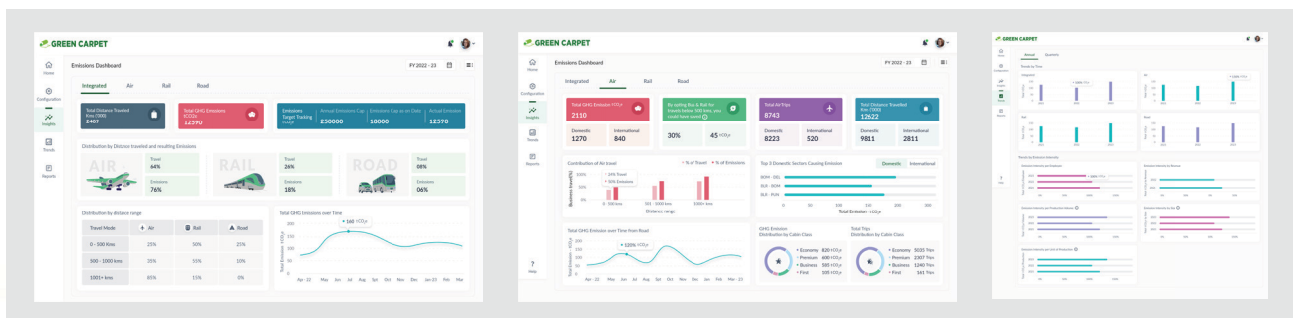


Aligned to global sustainability frameworks

Monitor your travel emissions, automate reporting, and accelerate your journey towards your net zero goals with Green Carpet.

To know more about the platform, please visit us at <https://www.ltimindtree.com/inxt/>

Book a demo today by writing to us at greencarpet@ltimindtree.com



About LTIMindtree

LTIMindtree is a global technology consulting and digital solutions company that enables enterprises across industries to reimagine business models, accelerate innovation, and maximize growth by harnessing digital technologies. As a digital transformation partner to more than 700 clients, LTIMindtree brings extensive domain and technology expertise to help drive superior competitive differentiation, customer experiences, and business outcomes in a converging world. Powered by 83,000+ talented and entrepreneurial professionals across more than 30 countries, LTIMindtree — a Larsen & Toubro Group company — combines the industry-acclaimed strengths of erstwhile Larsen and Toubro Infotech and Mindtree in solving the most complex business challenges and delivering transformation at scale. For more information, please visit <https://www.ltimindtree.com/>.