

Brochure

Digital Transformation through Connected, Intelligent and Sustainable Solutions

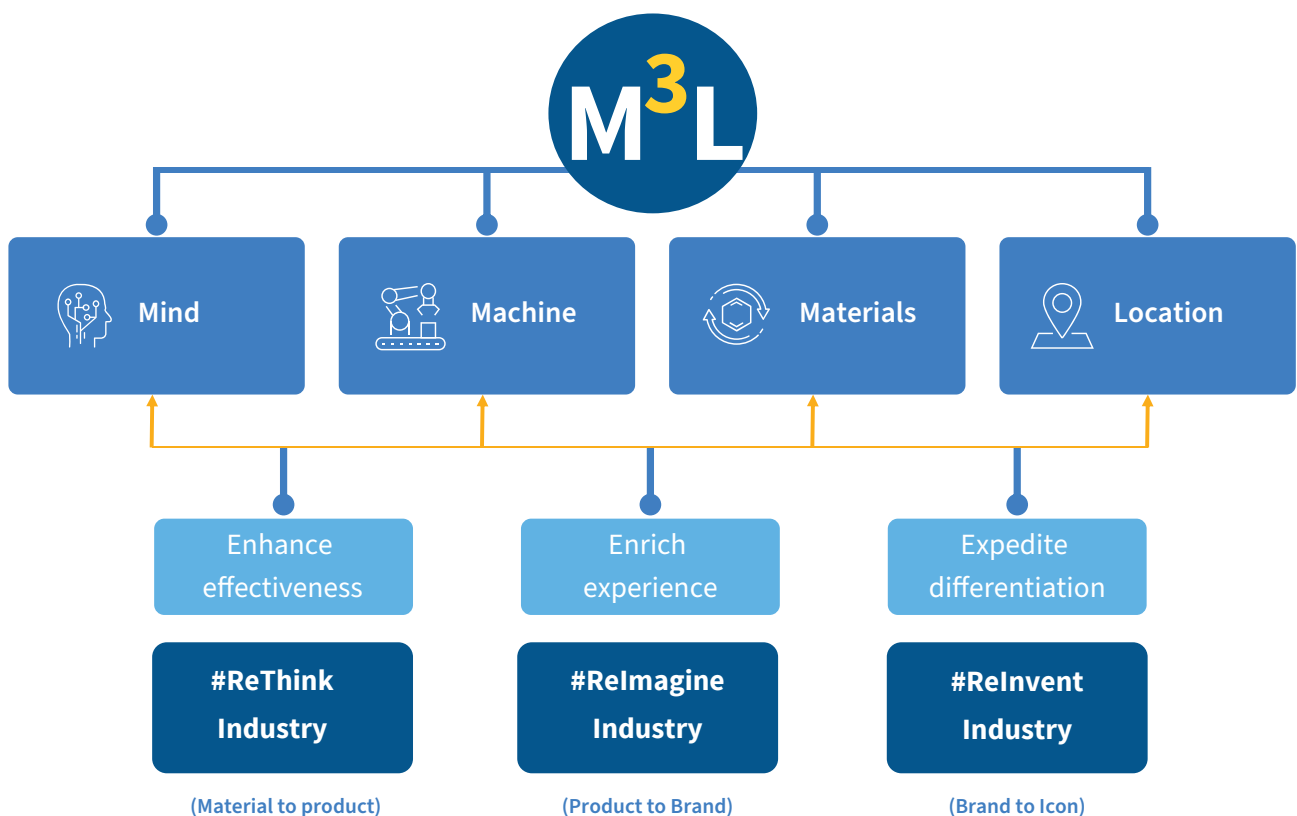


Today, most enterprises across industries are looking to scale the next generation of Digital Transformation, which combines physical, digital, and virtual spaces. Towards this, enterprises are leveraging capabilities spanning IoT, Industry 4.0 solutions, and climate technologies to enhance operational visibility, deliver intuitive experiences to their end customers, and envision a future that is sustainable with net zero emissions. However, there are multiple barriers, ranging from business models to operations to technology.

For instance, the volatile economic climate has driven businesses to rethink how they run their operations value chain by becoming more resilient. Another challenge is to democratize IoT skills at scale, given that the demand for IoT knowledge is constant and growing. A platform-led approach by enterprises solves this hurdle.

At LTIMindtree, we bring solutions to life from edge to experience by leveraging the ecosystem of Mind, Material, Machines, and Location (M3L) for disruptive business outcomes. Our bouquet of solutions, platforms, and industry products across asset management, worker productivity, track-n-trace, geospatial technologies, analytics and ESG are helping enterprises accelerate to a connected, intuitive, and sustainable future.

Our Strategy to Realize this





Our proposition includes:

- **Intelligent Industry:** Industrial automation and transformation, powered by our IXC (Industry X.0 Canvas) framework
- **Connected Products:** Essentially digital product engineering, combining physical, digital, and virtual spaces, and including the onboarding IoT devices, data acquisition and the integration of different data sources (Engineering Design, Product Lifecycle Management), ERP, Asset Management etc.) in a contextualized manner to create asset Digital Twin for remote monitoring, predictive maintenance, automated regulation, and cognitive assistance
- **Intelligent Supply Chain:** Comprises competencies around the Resilient Supply Chain Control Tower
- **Smart Spaces:** Putting employees at the heart of the connected transformation, which includes the onboarding the different components of building systems like heating, ventilation and air conditioning systems, lighting systems, sewage and water treatment plants, air quality, security access, DG sets, solar etc.) on one single platform for real-time monitoring. Powered by Digital Twin and data-driven insights, it helps organizations optimize energy consumption, reduce carbon footprints, and enhance the end user experience
- **Green Tech:** Creating circular economies with sustainability at the core. At the intersection of human intelligence and connectivity, we empower our customers to fast track their net zero journey

Our platforms are fuelled by cutting edge technologies including 5G, IoT middleware, edge, AI and analytics which power connectivity and uptime resilience across:

12,000+
Equipment

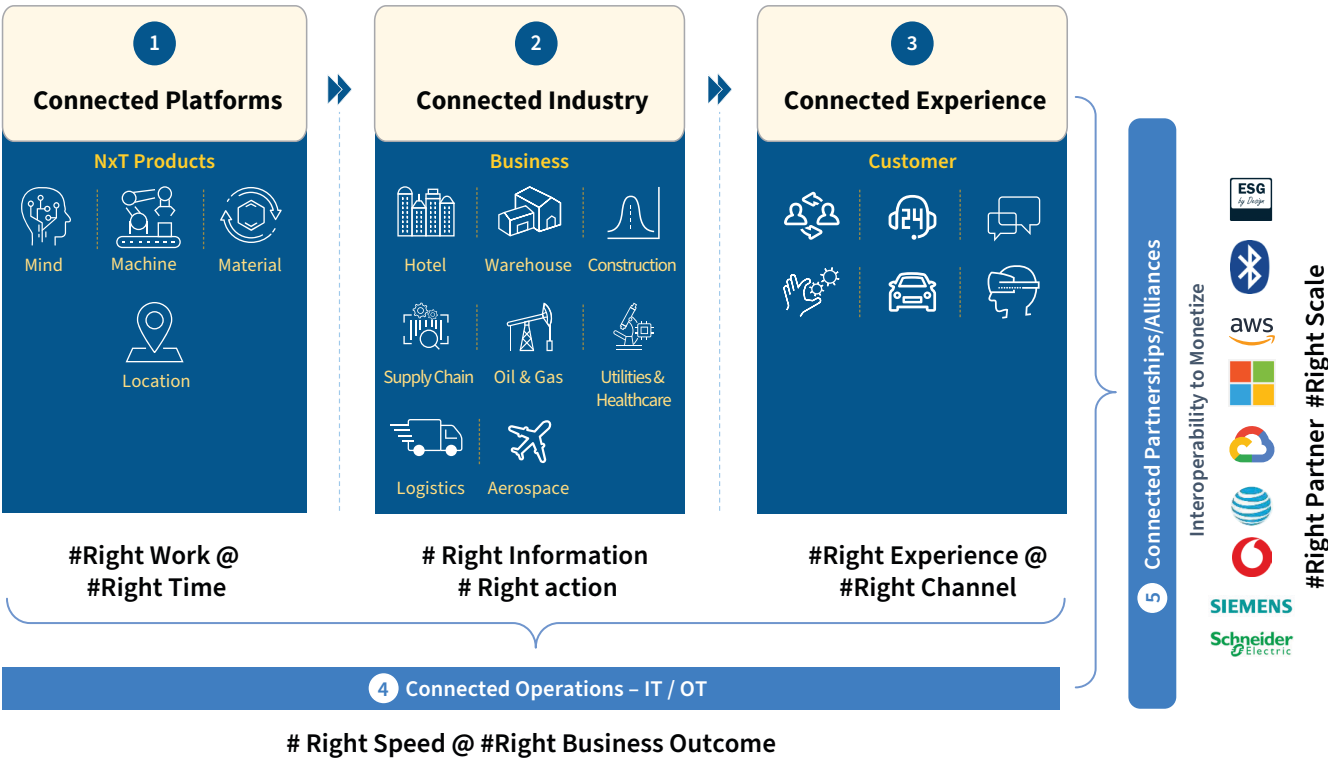
250,000+
Workers

6,900+
GPS-enabled Vehicles

How we do it:

Our differentiated 5C approach helps us drive **Next Gen Digital Transformation** from the **edge to experience** for disruptive business outcomes.

Our '5C' Ecosystem



At LTIMindtree, we help you **Rethink, Reimagine, and Reinvent** your business, and accelerate transformation at a scale for a more **Connected, Intelligent and Sustainable future**. To know more about how we can help you with bespoke solutions to address your requirements, please write into info@ltimindtree.com.



About LTIMindtree

LTIMindtree is a global technology consulting and digital solutions company that enables enterprises across industries to reimagine business models, accelerate innovation, and maximize growth by harnessing digital technologies. As a digital transformation partner to more than 700 clients, LTIMindtree brings extensive domain and technology expertise to help drive superior competitive differentiation, customer experiences, and business outcomes in a converging world. Powered by 84,000+ talented and entrepreneurial professionals across more than 30 countries, LTIMindtree — a Larsen & Toubro Group company — combines the industry-acclaimed strengths of erstwhile Larsen and Toubro Infotech and Mindtree in solving the most complex business challenges and delivering transformation at scale. For more information, please visit <https://www.ltimindtree.com/>