

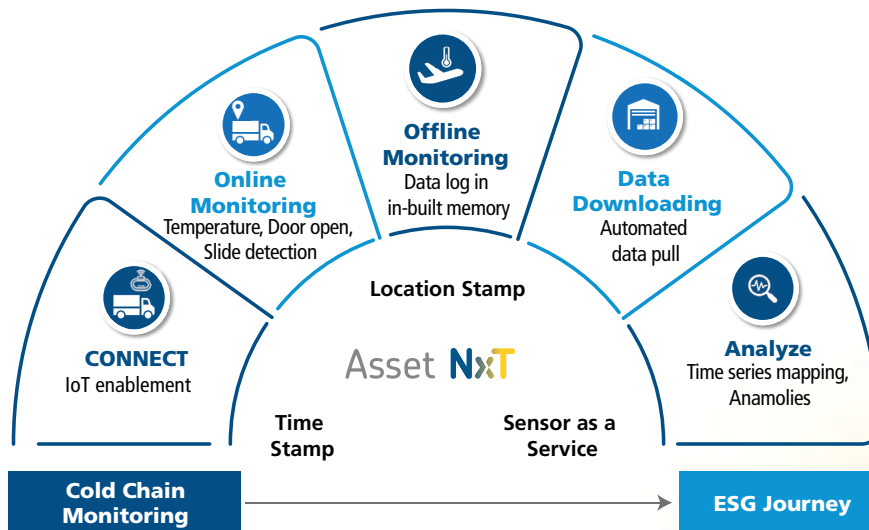
# Cold Chain Monitoring Solution



## Enabling last mile visibility

With increasing food demand and changing lifestyle, cold chain has become the focal point for the government and investors. This industry facilitates long distance transport of various perishable products, seafoods and seasonal fruits available for the entire year. It's a kind of linkage between the farmers / producers and consumers.

LTIMindtree offers the customized Cold Chain Monitoring Solution to enable last mile visibility of exposed temperature of perishable products with time stamp. This integrated system helps in maintaining quality in terms of freshness, appearance and many more..



**Enabling Last Mile Visibility**



**Sensors with in-built memory**



**Configurable Monitoring Frequency**

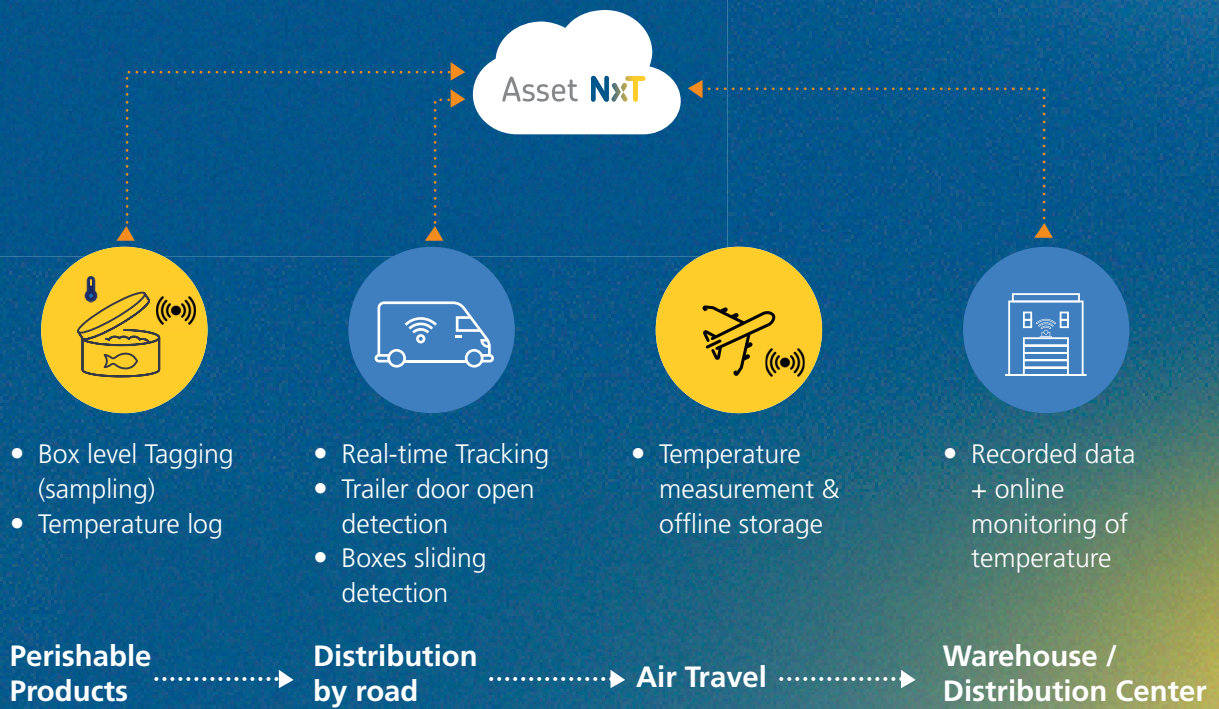


**Ensuring Food Quality**

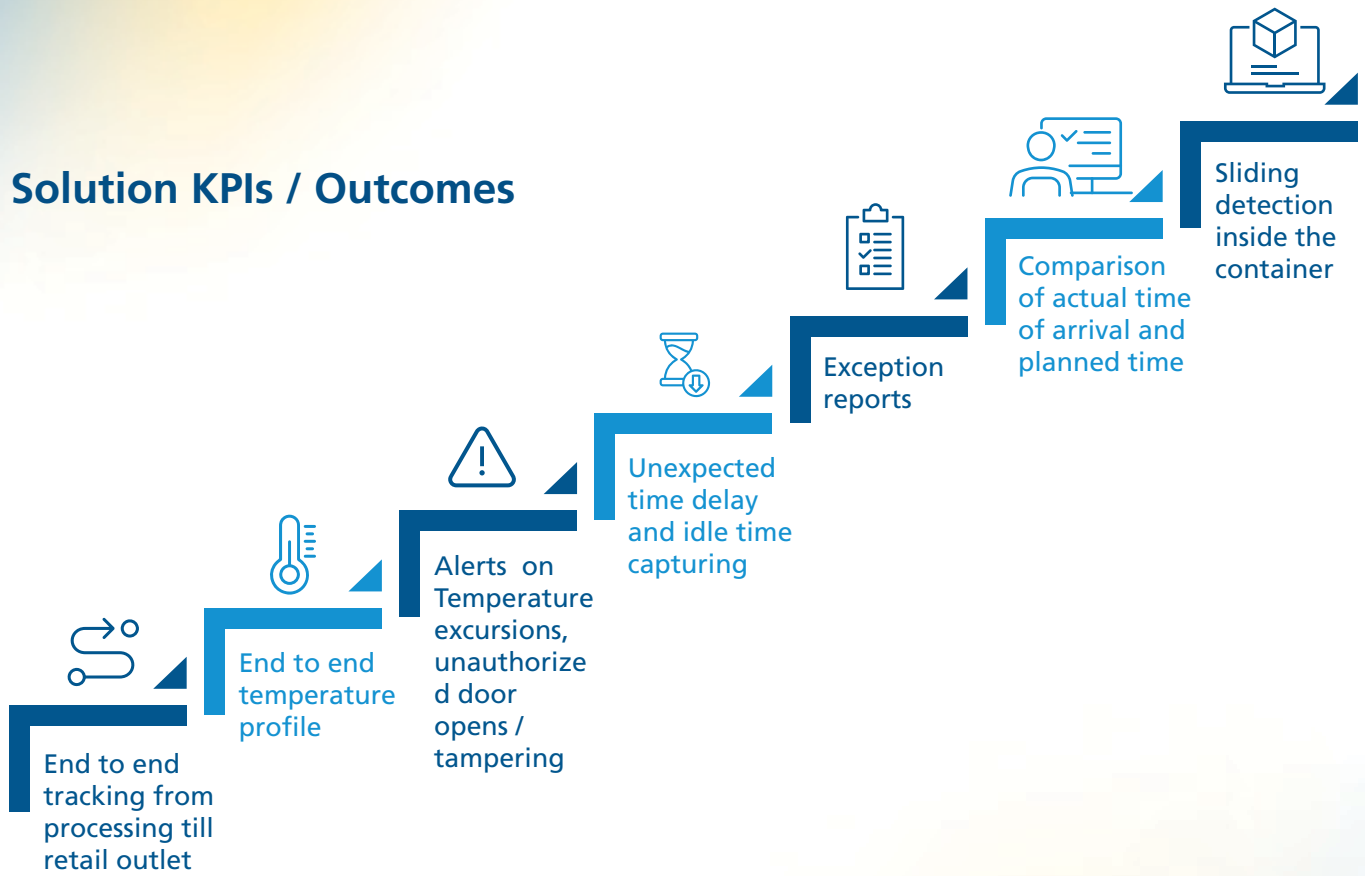


**Compliance Adherence**

## Technology Enabled Value Chain



## Solution KPIs / Outcomes



## Business Value Addition



**Safe Food / Product**



**Regulatory Compliance**



**Data Driven Approach**



**One Stop Solution**

