



**BROCHURE**

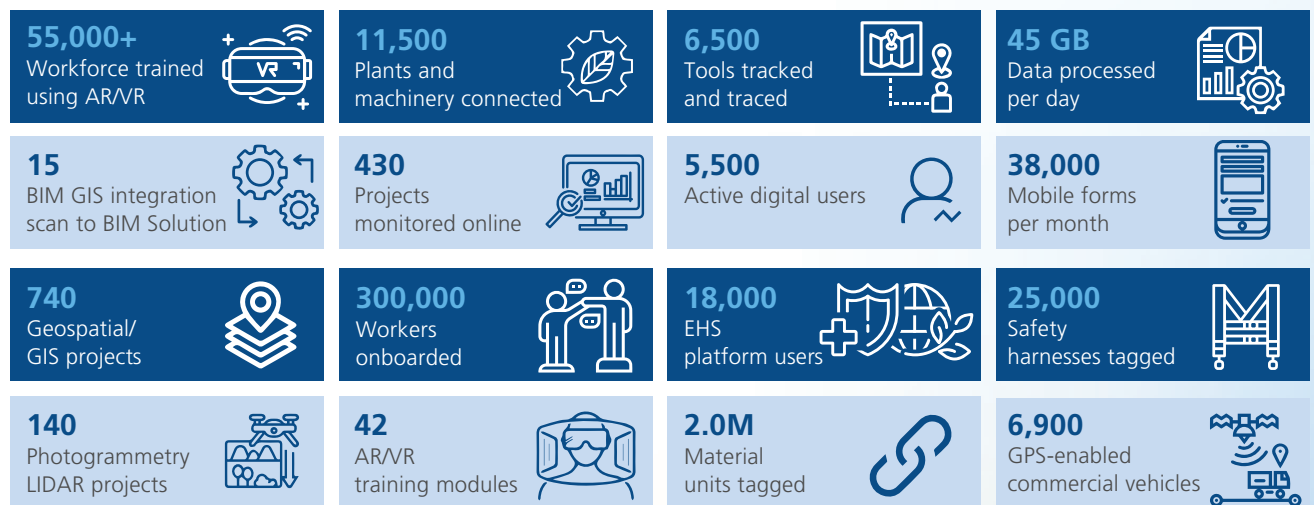
# **Transform Legacy Environments into Hyper-Connected Ecosystems**

LTIMindtree NxT brings digital transformation strategies to life with IoT-enabled and AI-powered solutions to drive both operational efficiency and sustained growth for our clients.

Our solutions span the product life cycle and supply chain—including engineering, design, sales, inventory, scheduling, quality and field service—so you can respond quickly to supply chain disruptions, changes in demand or new competitors.

# A Trusted Source for End-to-End Transformation

Gather, consolidate, and analyze data from every aspect of your organization to make informed business decisions. With out-of-the-box connectivity with Insight NxT, your organization can track and aggregate data from disparate business processes to innovate and improve.



## Essential Digital Solutions for Industry 4.0

Our platforms and services unlock the power of data to make informed business decisions with an advanced, yet intuitive AI interface.

### Asset NxT

Get real-time visibility to a wide range of industrial equipment, machines, vehicles, and systems. We leverage IoT technology to build a network of connected assets, where high-value data is linked and processed in real-time. AI-powered algorithms convert data into insights for a variety of applications, from equipment performance to perfectly timed preventive maintenance. Access to these new insights delivers benefits, such as improving equipment availability and optimizing fuel and energy consumption.

## Worker NxT

Identify, hire, train and protect highly qualified and productive workers with the ease of smart technologies. Even in tight labor markets, our solution connects our clients to qualified workers and provides intelligent tools for onboarding, training, and management. Once workers are on the job, our solution collects and analyzes real-time data to ensure worker safety and augments physical and cognitive abilities. Our platform also streamlines costly tasks, such as attendance tracking, skills assessment, and safety assurance.

## Material NxT

Manage materials across your supply chains in real-time, from anywhere, with our fully integrated track-and-trace solution. Intuitive dashboards make it easy to accurately monitor material availability, location, utilization, and reconciliation. Materials are labeled with QR codes, bar codes or RFID tags. Our platform gives our customers the full visibility they need to efficiently schedule crews, optimize ordering and inventory levels, view inspection data, manage returns, track project costs, and make strategic decisions that improve project outcomes.

## Geospatial NxT

Whether you are using location intelligence for strategic business planning or coordinating construction and maintenance activities on field, our offerings bring real-time location insights to help optimize efficiency, improve safety and reduce costs. We leverage advanced technologies across the entire location information value chain – data collection, processing, analysis, visualization, and integration with various enterprise systems – to generate with the spatial insights our customers need to augment decisions in a quick and cost-effective manner.

## Insight NxT

Autonomously derive intelligence from connected ecosystems of workers, machines, locations, and business processes. Smart data management and advanced analytics tools turn raw data into actionable insights that our clients use to drive informed business decisions, including the deployment of Industry 4.0 initiatives, transitioning from CapEx to OpEx models or engaging in highly flexible pay-as-you-consume models. The 'Edge to experience' capabilities of our platform, enhanced with advanced AI and ML technologies, accelerate digital transformations across the enterprise, from engineering and finance to supply chain and manufacturing.

# Turn Industry 4.0 into a Growth Engine

Ready to use a holistic approach to a profitable Industry 4.0 transformations? [Visit us](#) to learn how LTIMindtree is enabling organizations to engage customers like never before, anticipate their needs, and respond with incredible speed and precision.



**LTIMindtree** is a global technology consulting and digital solutions company that enables enterprises across industries to reimagine business models, accelerate innovation, and maximize growth by harnessing digital technologies. As a digital transformation partner to more than 700+ clients, LTIMindtree brings extensive domain and technology expertise to help drive superior competitive differentiation, customer experiences, and business outcomes in a converging world. Powered by nearly 90,000 talented and entrepreneurial professionals across more than 30 countries, LTIMindtree—a Larsen & Toubro Group company—combines the industry-acclaimed strengths of erstwhile Larsen and Toubro Infotech and Mindtree in solving the most complex business challenges and delivering transformation at scale. For more information, please visit [www.ltimindtree.com](http://www.ltimindtree.com).