



# INFINITY AppLens

Your Cloud Re-engineering Assistant

# Application Assessment for Effective Cloud Transformation

Cloud computing technologies are key enablers to digital transformations today where 52% of the enterprises believe visibility across the IT landscape is critical to their cloud acceleration efforts. 46% think assessment strategies are important for effective cloud migration that will enable enterprises to have a clear vision and roadmap for agile, scalable and cost-effective cloud implementations.

For enterprises to gain a competitive edge and generate impactful ROIs, it is essential to evaluate the current ecosystem that include infrastructure, applications, data, security, processes and tools. The first step to a well-established cloud strategy begins with understanding the as-is application architecture through discovery and assessment. Based on the assessment analysis, application portfolios are evaluated to determine their cloud readiness, disposition and formulate a cloud migration plan.

Despite the steady efforts, many enterprises are still striving and facing challenges to realize the full value of cloud. Key challenges observed -

## **Lack of a well-defined migration strategy:**

Zero or minimal understanding and planning of how legacy, on-premise or existing cloud applications need to be moved to a newer technology stack.

## **Unanticipated costs:**

Moving to cloud is initially expensive and if potential financial impact is not determined beforehand, it will lead to long-term monetary risks and unforeseen expenses.

## **Understanding dependencies:**

Enterprise teams work in silos, having limited view and understanding of interconnected components while building applications. Due to absence of practices that map and manage application, tool, platform and server dependencies, migrating to cloud becomes complicated.

## **Lack of visibility:**

Many enterprises are unable to track issues or changes associated with the application portfolio. Lack of a holistic viewpoint from a cloud migration perspective makes it difficult for enterprises to take informed decisions.

## **Cloud provider lock-in:**

Cloud platform or vendor lock-in restricts enterprises to adopt a cloud-service provider.

## **Inadequate cloud expertise:**

Lack of training, knowledge, best practices and certified cloud architects causes shortage of skilled cloud resources.

# How LTI can help

LTI's cloud consulting services are a comprehensive suite of well-defined assessment templates, tools, methodologies, best practices and skilled experts that enable enterprises to devise right-fit cloud evaluations. Our tool-based services are key accelerators to automating cloud migration assessments for effective cloud transformations.

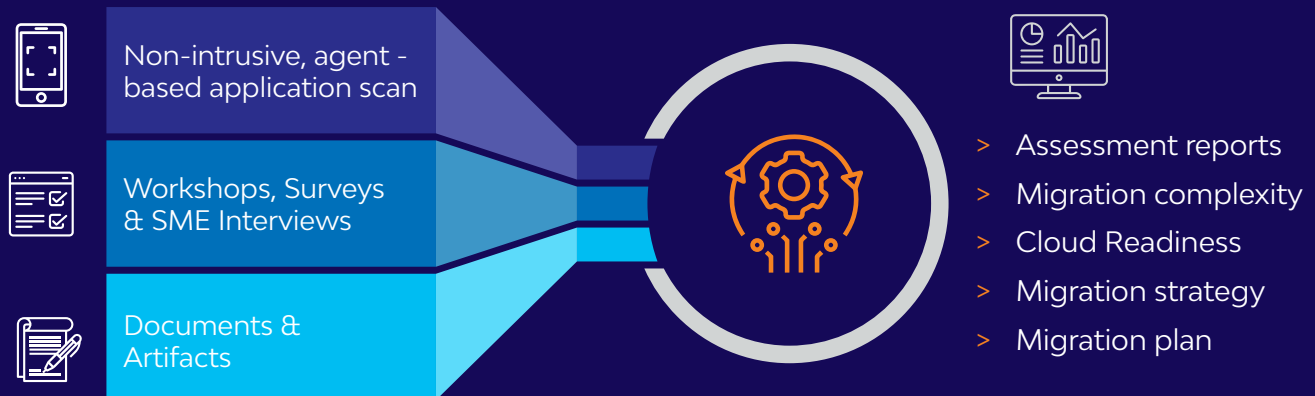
LTI's cloud assessment toolkit enables enterprises to assess their cloud-readiness as well as devise an effective cloud migration strategy through application portfolio assessment. It helps build a robust architecture blueprint, transformation roadmap, network topology and TCO analysis. This toolkit is a cloud-agnostic solution that effectively evaluates and guides cloud migrations through the 6R approach. It also provides end-to-end visibility on the security, compliance and resilience strategies to outline a purposeful cloud adoption roadmap.

## LTI's Infinity AppLens: Application Assessment Toolkit

Infinity AppLens is a re-engineering assistant, that assesses your applications' cloud compatibility and readiness to recommend effective cloud migration strategies. It is a toolkit that conducts deep code analysis to furnish detailed assessment reports. The report helps identify application migration complexities as well as map out a right-fit migration approach, plan, and estimates.

InfinityAppLens highlights the challenges associated with the current application setup and architecture to determine the business value that can be realized through cloud adoption. It analyzes application source code across 200+ parameters, reports incompatibilities and provides suitable recommendations for cloud-readiness.

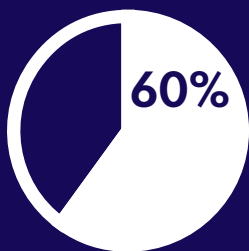
# Infinity AppLens: How it Works



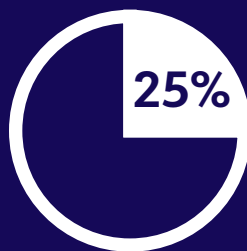
## Key Features

- **Non-intrusive** application scan with 200+ cloud-native patterns
- **Cloud migration** disposition strategy
- **Monolith to Microservices** recommendations
- **Assessment reports** on migration complexity, cloud-readiness and resiliency
- **Highlights** application dependencies and third-party library incompatibilities
- **Flexibility** to customize cloud-native patterns based on requirements
- **Highly scalable and supports** Java, .Net and Python technologies

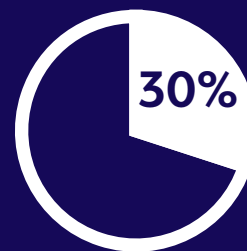
# Business Benefits



Rapid Application Analysis



Accelerated Cloud Migration



Reduced Technical Debt

## Success Stories

### | Cloud Migration Strategy

LTI Infinity AppLens facilitated a thorough assessment from an industry, cost, technology and compliance point of view to modernize a **global pharmaceutical giant's** architecture on cloud. Infinity AppLens provided in-depth insights and recommendation reports for security, compliance and cost optimization to generate a templated disposition strategy across application portfolios. The migration roadmap helped the client establish a hybrid cloud model to achieve next-gen operations and continuous FinOps.

### | Application Modernization for Cloud Transformation

**An American multinational energy corporation** planned to assess and transform its chemical system application to cloud. LTI's Infinity AppLens toolkit solely evaluated 70+ out of the 100+ cloud-specific parameters to suggest a cloud-agnostic, portable, container-based solution. It also helped identify Greenfield technologies for operational transformation. The client experienced zero downtime, 30% faster time-to-market and 3x times faster development by standardizing the development and deployment process with automated client-specific templates.

### | Cloud Readiness Assessment and Migration

LTI's Infinity AppLens assessed a **renowned South African Banking Institute's** on-premise applications for cloud-native compliance. The LTI toolkit recommended refactoring/rehosting to scale parts of the application independently and advocated serverless architecture for accelerated cloud deployments. This helped the client rationalize and consolidate their tools and technology stack, auto-scale on demand and right-size computing resources with zero business disruption and recommended cost savings of approximately \$1.4M.



**LTI (NSE: LTI)** is a global technology consulting and digital solutions Company helping more than 495 clients succeed in a converging world. With operations in 33 countries, we go the extra mile for our clients and accelerate their digital transformation journeys. Founded in 1997 as a subsidiary of Larsen & Toubro Limited, our unique heritage gives us unrivalled real-world expertise to solve the most complex challenges of enterprises across all industries. Each day, our team of more than 46,000 LTites enable our clients to improve the effectiveness of their business and technology operations and deliver value to their customers, employees and shareholders. Find more at <http://www.Ltinfotech.com> or follow us at [@LTI\\_Global](https://twitter.com/LTI_Global).

[info@Ltinfotech.com](mailto:info@Ltinfotech.com)

 | A Larsen & Toubro  
Group Company