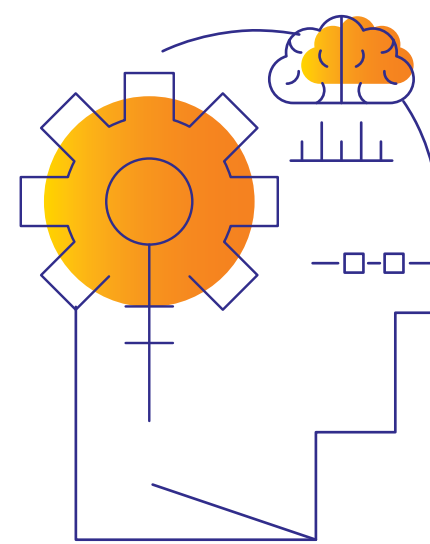


Digital Matters

4th Anniversary Issue



Hello readers,

Season's Greetings from LTI! This issue is special, not just because holidays are approaching and a new decade is beginning, but also because this is the fourth anniversary issue of Digital Matters at LTI! That's four years of interesting updates on exponential technologies. Thank you for your continuous engagement and encouragement.

As we move into the future, let's pause and acknowledge that we live in a watershed era, a time when technology is taking us closer to a world of smart-thinking, analytical machines, and that traits of creativity and innovation to set us humans apart and above the machines. Do read more about this conundrum in an interview with our Chief Digital & Analytics Officer, Soumendra Mohanty. Here's that conversation and a lot more from this month.

Happy Holidays!

- **Peeyush Dubey**
CMO, LTI

The Exponential View

As organizations engage in the implementation of analytics and data science, a multitude of challenges lie ahead. In an interesting conversation with [Soumendra Mohanty](#) – An acclaimed thought leader and subject matter expert the field of AI, Analytics, Data Science and Automation, we learn why “human-in-the-loop” is so important.

Know More 

Deep Dive

Can Voice Commands Enhance Customer Experience for Transfer Agency Systems?

It is irrefutable that voice command technologies applied in assistants like [Siri](#), Alexa, Cortana, or Google's Assistant are taking the user experience to a level that was unimaginable 10 years ago. Voice command capabilities and sophistication has grown and improved rapidly, and today they are embedded into products directly or indirectly, impacting key or [common areas](#) of our daily life.

Know More 



Trending @LTI

LTI big stories, events, awards & recognitions

Yasemin Sezer named one of the Top 100 Most Powerful Women in Canada by the Women's Executive Network (WXN) 

LTI Powering Houston Marathon 2020 

Tech Quote of the Month

“Never trust to general impressions, my boy, but concentrate yourself upon details!”

Sherlock Holmes's advice to the new-age [Data Scientist](#)

From Your Desk to the World

Theme of the Month: Crypto travel- Are [digital currencies](#) transforming your travel expenditures?

Hey there! Technology fascinates all of us. It reflects the world that we build every day, and shapes it at the same time. Be it a new book or a new experience, you can tell us what it means to you, and we will let the world know.

Share Now

LTI (NSE: LTI, BSE: 540005) is a global technology consulting and digital solutions company helping more than 360 clients succeed in a converging world. With operations in 30 countries, we go the extra mile for our clients and accelerate their digital transformation with LTI's Mosaic platform enabling their mobile, social, analytics, IoT and cloud journeys. Founded in 1997 as a subsidiary of Larsen & Toubro Limited, our unique heritage gives us unrivaled real-world expertise to solve the most complex challenges of enterprises across all industries. Each day, our team of more than 30,000 LTItes enable our clients to improve the effectiveness of their business and technology operations, and deliver value to their customers, employees and shareholders. Find more at www.Lntinfotech.com or follow us at [@LTI_Global](#)