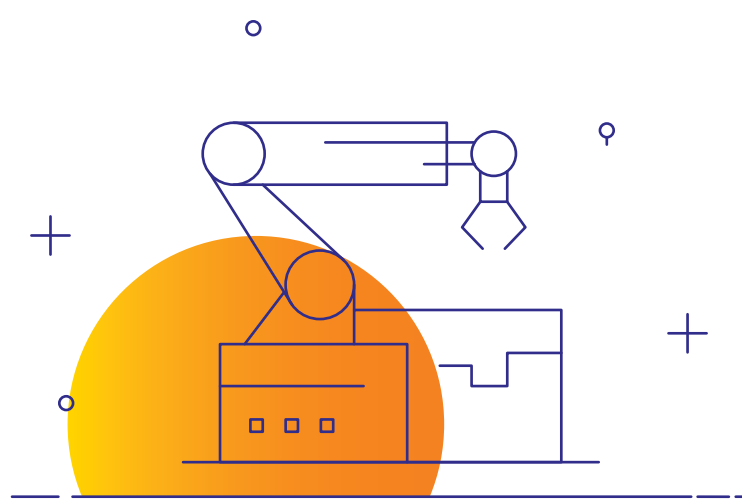


# Digital Matters

## Analytics + Automation

[Know more](#)



Exponential technologies allow organizations to do what was unimaginable a few years ago – anticipate wear and tear of machinery, use facial recognition technologies for insurance appraisals, process claims using mobile phones, or even manage entire ‘smart’ cities. Speed, innovation, automation and digitization enable this approach, and we believe they will be so critical or every **breakaway enterprise** that we now have a dedicated team focused on enabling our clients and end-customers, with New Ways of Working – LTI NWOW.

However, adoption of and succeeding with the new ways can be tricky. It needs to be perceived as a fresh wind of change – a cultural realignment and a mind shift that is welcomed, embraced and adopted at all levels. For an organization that understands **New Ways of Working**, the impact can be profound. The secret to success – embrace the change and address the apprehension!

- **Peeyush Dubey**  
CMO, LTI

## The Exponential View

The concept of NWOW is truly fascinating as it envisages the transition from traditional to original and novel ways of transforming the world. We talked to LTI’s Brijesh Prabhakar – Vice President, Ways of Working – Platforms, to get to the roots of NWOW and understand what the future looks like.

[Know More](#)

## Deep Dive

### The Future of Work – Addressing Automation Anxiety

Fast-evolving innovations in technology mean that most of us will soon share our workplaces with artificial intelligences (AI) such as machine learning (ML), natural language processing, virtual assistants, and bots. AI and ML are possibly the most transformative technologies available today.

[Know More](#)



## Trending @LTI

### LTI big stories, events, awards & recognitions

Sudhir Chaturvedi recognized among the Top 100 Most Influential BAME Leader in UK Tech, for the second consecutive year

WSO2 Announces Global Partnership with LTI

LTI among the DQ Top 20; the recognition highlights our revenue growth and headcount milestones.

## Tech Quote of the Month

**“Light travels faster than sound. This is why some people appear bright until you hear them speak.”**

Not anymore, says **Facial Analytics!**

## From Your Desk to the World

Hey there! Technology fascinates all of us. It reflects the world that we build every day, and shapes it at the same time. Be it a new book or a new experience, you can tell us what it means to you, and we will let the world know.

**Theme of the Month:** Your first experience with a virtual assistant

[Share Now](#)

LTI (NSE: LTI, BSE: 540005) is a global technology consulting and digital solutions company helping more than 360 clients succeed in a converging world. With operations in 30 countries, we go the extra mile for our clients and accelerate their digital transformation with LTI’s Mosaic platform enabling their mobile, social, analytics, IoT and cloud journeys. Founded in 1997 as a subsidiary of Larsen & Toubro Limited, our unique heritage gives us unrivaled real-world expertise to solve the most complex challenges of enterprises across all industries. Each day, our team of more than 30,000 LTItes enable our clients to improve the effectiveness of their business and technology operations, and deliver value to their customers, employees and shareholders. Find more at [www.Lntinfotech.com](http://www.Lntinfotech.com) or follow us at @LTI\_Global